



Maiolo e Vacca s.r.l

INDUSTRIAL VALVES



- GATE VALVES
- GLOBE VALVES
- SWING CHECK
- ANGLE VALVES
- Y GLOBE VALVES
- Y STRAINERS
- BELLOWS SEAL GATE
- BELLOWS SEAL GLOBE
- PRESSURE SEAL GATE
- PRESSURE SEAL GLOBE
- PRESSURE SEAL CHECK

CLASS:

150
300
600
900
1500
2500
4500

RANGE: 2" UP TO 42"

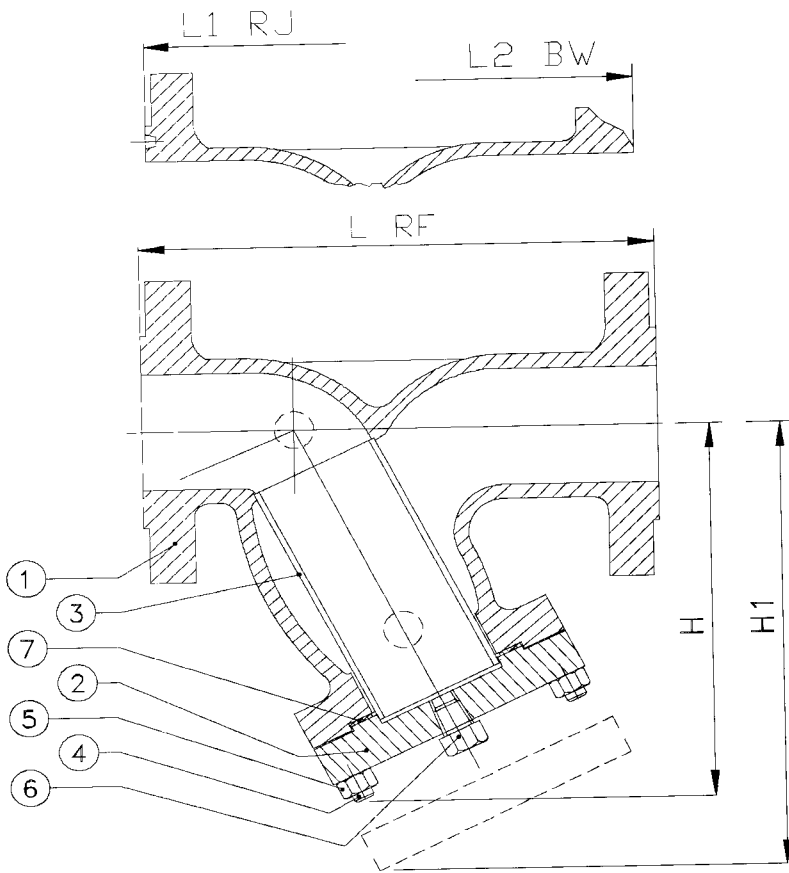


0496





Art. 655 FILTRI SERIE ANSI 300
Strainers Valves series ANSI 300

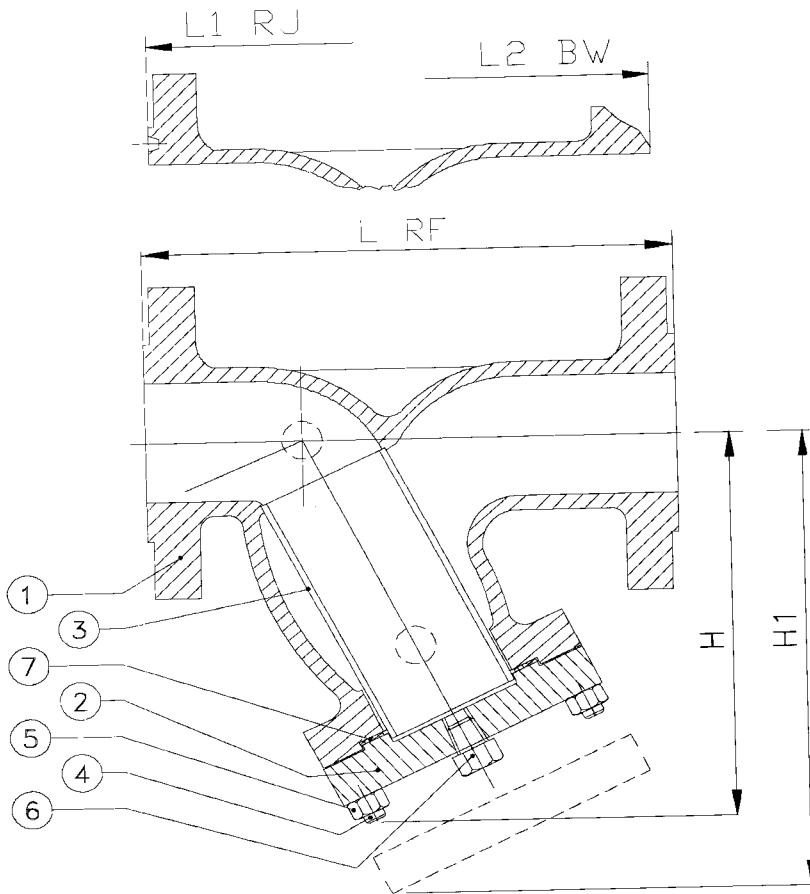


DN	L RF	L1 RJ	L2 BW	H	H1	V
2"	10 ½	11 ⅞	10 ½	8 ½	13 ¾	
50	267	283	267	215	350	
2"½	11 ½	12 ⅞	11 ½	9 ¼		
65	292	308	292	235		
3"	12 ½	13 ⅞	12 ½	11,00	16 ¾	
80	318	333	318	275	425	
4"	14,00	14 ½	14,00	13 ½	19 ¾	
100	356	371	356	340	500	
6"	17 ½	18,00	17 ½	15 ½	23 ⅝	
150	445	457	445	390	600	
8"	22,00	22 ⅝	22,00	20 ½	30 ¾	
200	559	575	559	520	780	
10"	24 ½	25 ⅞	24 ½	25,00	36 ⅝	
250	622	638	622	640	930	
12"	28,00	28 ⅝	28,00	31,00	39,00	
300	711	727	711	790	990	
14"	33,00	33 ⅝	33,00	29 ¼	47 ¼	
350	838	854	838	742	1200	
16"	34,00	34 ⅝	34,00	39,00	63,00	
400	864	879	864	900	1600	
18"						450
20"						500
24"						600
26"						650
28"						700
30"						750
36"						900
40"						1000
42"						1050
48"						1200
64"						1600

POS	DENOMINAZIONE - Part list	MATERIALI - Materials
1	CORPO Body	ASTM A216 WCB
2	COPERCHIO Bonnet	ASTM A216 WCB
3	CESTELLO Screen	AISI 304
4	PRIGIONIERI Bolt	ASTM A193 B7
5	DADI Nut	ASTM A194 2H
6	TAPPO Plug	ASTM A182 304
7	GUARNIZIONE Gasket	GRAPHITE+F316
8		
9		
10		
11		
12		
13		
14		
15		
16		
17		
18		
19		
20		
21		
22		
23		
24		
25		
26		



Art. 650 FILTRI SERIE ANSI 150
Strainers Valves series ANSI 150



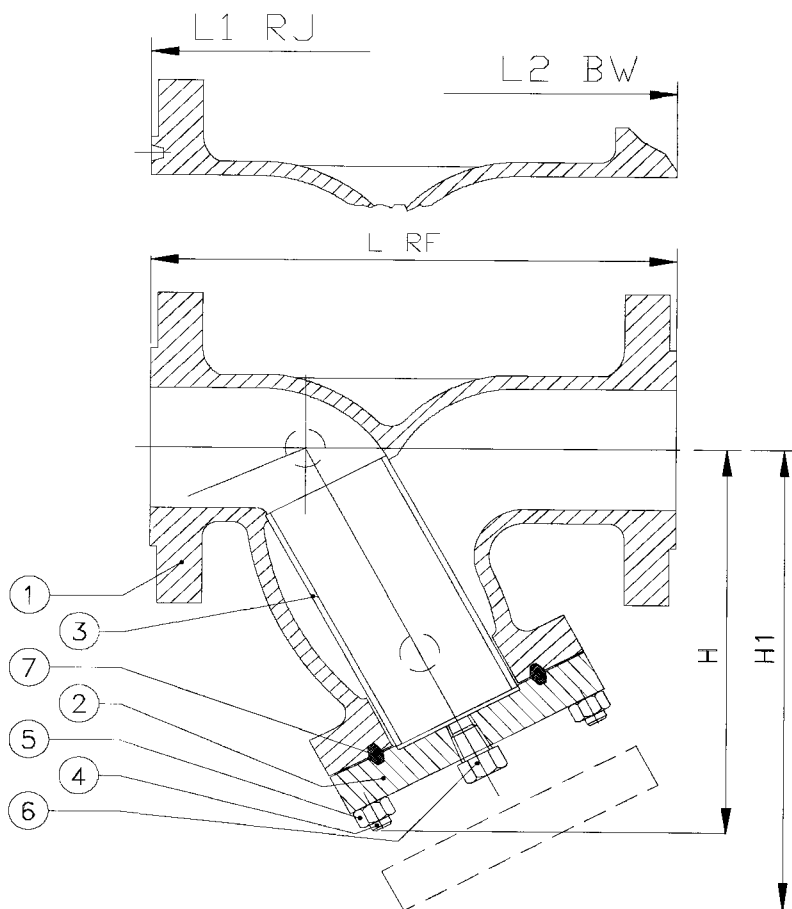
DN	L RF	L1 RJ	L2 BW	H	HI	V
2"	8,00	8 ½	8,00	8,00	13 ¾	
50	203	216	203	200	350	
2"½	8 ½	9,00	8 ½	9,00		
65	216	229	216	220		
3"	9 ½	10,00	9 ½	10,00	16 ½	
80	241	12	241	250	420	
4"	11 ½	12,00	11 ½	12 ½	19 ¼	
100	292	305	292	320	490	
6"	16,00	14 ½	16,00	14 ½	23 ½	
150	406	368	406	370	595	
8"	19 ½	20,00	19 ½	19,00	30 ⅝	
200	495	508	495	480	765	
10"	24 ½	25,00	24 ½	23,00	35 ⅞	
250	622	635	622	590	910	
12"	27 ½	28,00	27 ½	28,00	38 ⅞	
300	698	711	698	720	970	
14"	31,00	31 ½	31,00	28,00	46,00	
350	787	800	787	720	1170	
16"	36,00	36 ½	36,00	31 ½	59,00	
400	914	927	914	800	1500	

POS	DENOMINAZIONE - Part list	MATERIALI - Materials
1	CORPO Body	ASTM A216 WCB
2	COPERCHIO Bonnet	ASTM A216 WCB
3	CESTELLO Screen	AISI 304
4	PRIGIONIERI Bolt	ASTM A193 B7
5	DADI Nut	ASTM A194 2H
6	TAPPO Plug	ASTM A182 304
7	GUARNIZIONE Gasket	GRAPHITE+F316
8		
9		
10		
11		
12		
13		
14		
15		
16		
17		
18		
19		
20		
21		
22		
23		
24		
25		
26		

18"	450
20"	500
24"	600
26"	650
28"	700
30"	750
36"	900
40"	1000
42"	1050
48"	1200
64"	1600



Art. 660 FILTRI SERIE ANSI 600
Strainers Valves series ANSI 600



DN	L RF	L1 RJ	L2 BW	H	H1	V
2"	11 1/2	11 5/8	11 1/2	14,00	13 3/4	
50	292	295	292	360	350	
2 1/2"	13,00	13 1/8	13,00	16,00		
65	330	333	330	410		
3"	14,00	14 1/8	14,00	19,00	17,00	
80	356	359	356	485	430	
4"	17,00	17 1/8	17,00	23,00	20,00	
100	432	435	432	580	510	
6"	22,00	22 1/8	22,00	29,00	24,00	
150	559	562	559	740	610	
8"	26,00	26 1/8	26,00	34,00	31 1/8	
200	660	664	660	860	790	
10"	31,00	31 1/8	31,00	40,00	37 3/8	
250	787	791	787	1020	950	
12"	33,00	33 1/8	33,00	45 1/4	39 3/4	
300	838	841	838	1150	1010	
14"	35,00	35 1/8	35,00	50 1/2	48,00	
350	889	892	889	1280	1220	
16"	39,00	39 1/8	39,00	39,00	63,00	
400	991	994	991	900	1600	
18"						
450						
20"						
500						
24"						
600						
26"						
650						
28"						
700						
30"						
750						
36"						
900						
40"						
1000						
42"						
1050						
48"						
1200						
64"						
1600						

POS	DENOMINAZIONE - Part list	MATERIALI - Materials
1	CORPO Body	ASTM A216 WCB
2	COPERCHIO Bonnet	ASTM A216 WCB
3	CESTELLO Screen	AISI 304
4	PRIGIONIERI Bolt	ASTM A193 B7
5	DADI Nut	ASTM A194 2H
6	TAPPO Plug	ASTM A182 304
7	GUARNIZIONE Gasket	METAL
8		
9		
10		
11		
12		
13		
14		
15		
16		
17		
18		
19		
20		
21		
22		
23		
24		
25		
26		