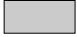

 building  
 clearance required (free of obstructions)  
 structural features by others

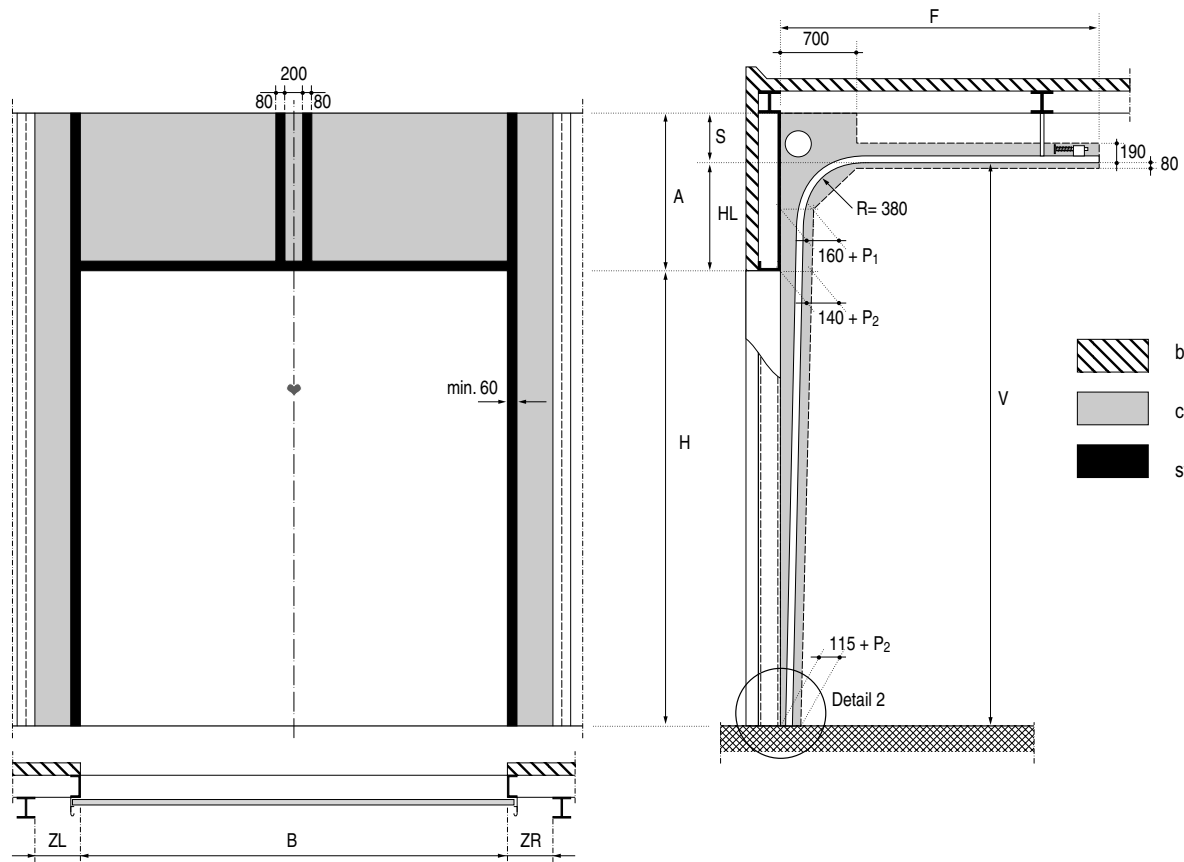
	dimension	minimum	measured
clear width	B	n.a.	..... mm
clear height (1)	H	n.a.	..... mm
mounting space (2)	S	400 mm	n.a.
headroom	A	700 mm	..... mm
overall depth	F	H + 1050 - HL mm	..... mm
clearance (3)	P1	40 mm	n.a.
	P2	105 mm	n.a.
sideroom pull cord (5)	ZL / ZR	130 / 130 mm	..... mm
track clearance height	V	H + A - S mm	..... mm
high lift	HL (4)	A - S mm	..... mm

(1) clear height = H + 10 mm (due to weather strip) see detail 2, page "Details"  
 (2) if H < 5000 mm and/or B < 5000 mm, then S<sub>min</sub> = 350 mm  
 (3) in the case of wicket and/or doors with bracing : P1 = 75 mm  
 (4) HL<sub>max</sub> = 4149 mm  
 (5) for manual chain host and electric drive see page 'sideroom required...'



**Important!**

- the clear opening must be level and square
- the fitting surfaces must be plumb and in line
- the finished floor must be laid and level and prevention from water ingress is recommended.
- the fitting surface should preferably be of steel
- if unsure of the structural suitability for door installation please contact our Sales Dept.
- dimensions are indicated in mm



- building
- clearance required (free of obstructions)
- structural features by others

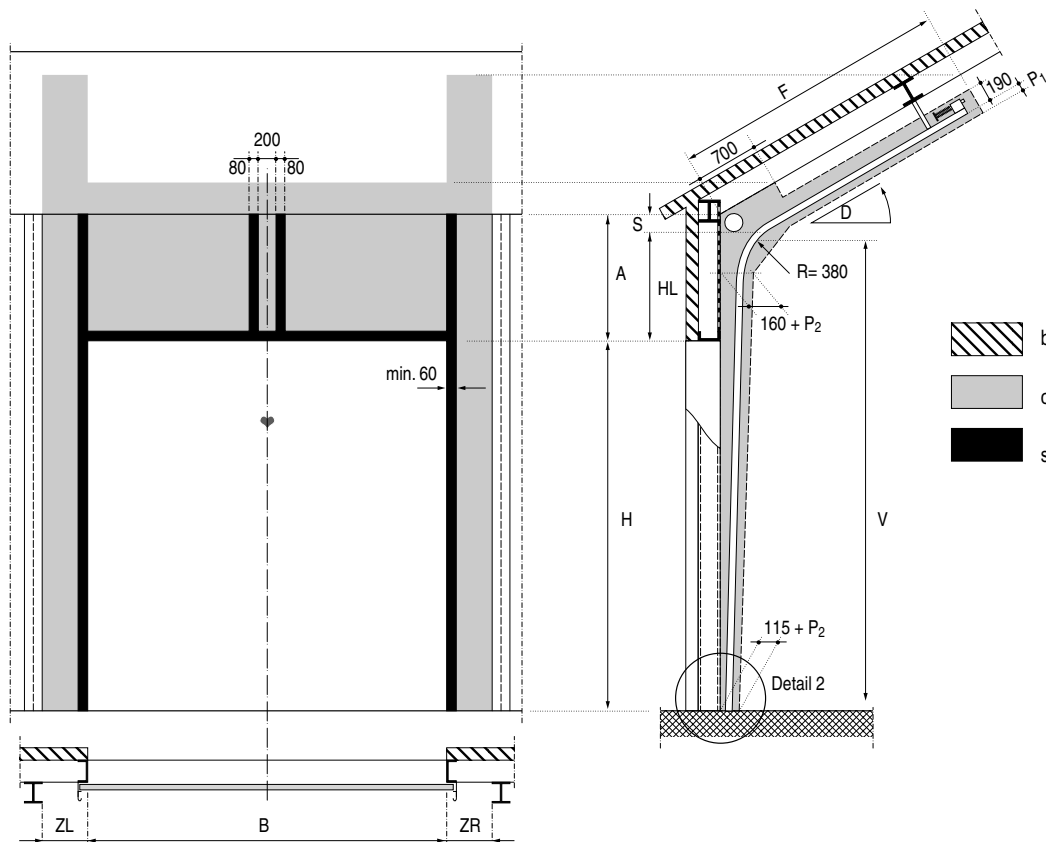
	dimension	minimum	measured
clear width	B	n.a.	..... mm
clear height (1)	H	n.a.	..... mm
drop (2)	S	400 mm	n.a.
headroom	A	700 mm	..... mm
overall depth	F	$H + 1050 - HL$ mm	..... mm
clearance	P1	75 mm	n.a.
	P2	105 mm	n.a.
sideroom pull cord (4)	ZL / ZR	130 / 130 mm	..... mm
track clearance height	V	$H + A - S$ mm	..... mm
high lift (3)	HL (3)	$A - S$ mm	..... mm




- (1) clear height =  $H + 10$  mm (due to weather strip) see detail 2, page "Details"
- (2) if  $H < 5000$  mm and/or  $B < 5000$  mm, then  $S^{\min} = 350$  mm
- (3)  $HL^{\max} = 4149$  mm
- (4) for manual chain host and electric drive see page 'sideroom required...'



**Important!**

- the clear opening must be level and square
- the fitting surfaces must be plumb and in line
- the finished floor must be laid and level and prevention from water ingress is recommended.
- the fitting surface should preferably be of steel
- if unsure of the structural suitability for door installation please contact our Sales Dept.
- dimensions are indicated in mm



 building  
 clearance required (free of obstructions)  
 structural features by others

	dimension	minimum	measured
clear width	B	n.a.	..... mm
clear height (1)	H	n.a.	..... mm
drop (2)	S	400 mm	n.a.
headroom	A	700 mm	..... mm
high lift	HL (5)	A - S mm	..... mm
overall depth	F	H + 1050 - HL mm	..... mm
clearance (3)	P1	40 mm	n.a.
	P2	105 mm	n.a.
sideroom pull cord (6)	ZL / ZR	130 / 130 mm	..... mm
track clearance height	V	H + A - S mm	..... mm
roof pitch (4)	D	5°	..... °

(1) clear height = H + 10 mm (due to weather strip) see detail 2, page "Details"  
 (2) if H < 5000 mm and/or B < 5000m, then S<sup>min</sup> = 350 mm.  
 (3) in the case of wicket and/or doors with bracing : P1 = 75 mm.  
 (4) D<sup>max</sup> = 45°  
 (5) HL<sup>max</sup> = 4149 mm  
 (6) for manual chain host and electric drive see page 'sideroom required...'



- Important!**
- the clear opening must be level and square
  - the fitting surfaces must be plumb and in line
  - the finished floor must be laid and level and prevention from water ingress is recommended.
  - the fitting surface should preferably be of steel
  - if unsure of the structural suitability for door installation please contact our Sales Dept.
  - dimensions are indicated in mm

